

الصحوّة Sahwa

Researching Arab Mediterranean Youth: **Towards a New Social Contract**

www.sahwa.eu



This project has received funding from the European Union's Seventh Framework Programme for research, technological development and demonstration under grant agreement no 613174

RESEARCH THEMES

Youth Opportunities

Education, Employment and Social Inclusion

To research the determinants of the mismatch between demand and supply of skills in the labour market and the expectations of young people in this respect, in particular young women

Youth Empowerment

Social and Political mobilization and participation

To research patterns of mobilization, social organization, political engagement and use of social media, contextualized by socio-economic, political conditions and historical revolution

Youth Cultures

Values, Representations and Social Conditions

To research cultural practices of young people in relation to the articulation of different social conditions, focused on the evolution of youth social values and civic participation

CROSS-CUTTING ISSUES

Gender Equity

To research different pathways towards fostering equality between young women and men and the existing or emerging conditions for establishing social justice in gender relations

Migration and International Mobility

To research the main determinants of migration and migration intentions, how they will evolve over time and what are their effects on local societies and transnational mobility

Comparative Transition Experiences

To research experiences and lessons to be extracted from youth transitions in Eastern Europe and Turkey

Public Policies and International Cooperation

To research youth and gender policies, as well as international cooperation in this areas, in particular in the ENP context

OBJECTIVES

SAHWA aims at addressing a variety of issues related to the youth in Arab Mediterranean countries with four broad objectives:

Conceptualizing transition in Arab Mediterranean countries with a focus on youth, from an interdisciplinary perspective

Mapping political, socio-economic and cultural change in the Arab Mediterranean world in a context of multiple transitions, focusing on:

- Perspectives from different countries and stakeholders
- Prospects for youth and trends to anticipate future change
- Identification of opportunities for youth, considered as a transformative agent

Comparing to similar transition processes in other historic contexts as possible models to inform the management of political and economic transformations in the Arab Mediterranean

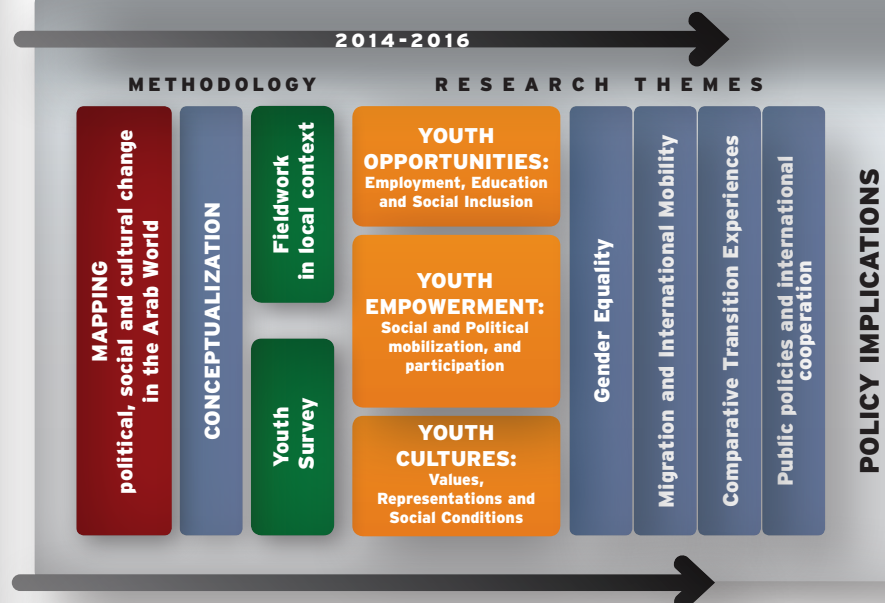
Informing policy-makers with a range of tools and original frameworks of analysis to achieve a better understanding of the role of youth and contribute to a better design of national public policies and EU cooperation to support change in the region.

METHODOLOGY

SAHWA is an interdisciplinary collaborative project that brings together socio-anthropological, economic and political, social and cultural approaches, with an emphasis on empirical research relying on:

- A **Multi-country Youth Survey** carried out amongst 10 000 young people in Algeria, Egypt, Lebanon, Morocco and Tunisia to take the pulse of Arab youth in these countries.
- A **Fieldwork in Local Context** research to explore the youth conditions and values in different socio-economic contexts within each country and across countries.

RESEARCH WORK FLOW



EXPECTED OUTCOMES

Youth Survey carried out amongst 10 000 young people in five Arab Mediterranean countries to produce a unique comparative dataset on youth issues for the region

Life Stories and Documentary reflecting narratives of young people to figure out self-representations, perceptions and cultural trends in the region

Cartography of change (both qualitative and quantitative) to visualize trends and dynamics in the region

Shababpedia an "on-line netnography" to explore concepts and perceptions related to youth issues

Scientific Papers covering all the Research Themes to be published in peer reviewed journals and publications

Scenarios on youth prospects and general social conditions to anticipate the future of the region and inform policy-making

Handbooks for Practitioners in the business and entrepreneurship and education and training sectors to translate the results of SAHWA research into tools for youth empowerment in the region.

Policy Briefs to disseminate research outcomes to policy-makers at national and EU levels

SAHWA Community, a virtual network of active stakeholders working on Arab Mediterranean youth

Dissemination events in Brussels, Marseille and Cairo to reach out to policy-makers and practitioners

PARTNERS



Barcelona Center for International Affairs
Iván Martín

Project Coordinator
Barcelona, Spain
www.cidob.org



ANIMA Investment Network
Emmanuel Noutary

Marseille, France
www.animaweb.org



Center of Arab Women for Training and Research
Soukeïna Bouraoui

Tunis, Tunisia
www.cawtar.org



Centre de Recherche en Economie Appliquée pour le développement
Nacer-Eddine Hammouda

Alger, Algeria
www.cread.edu.dz



Education for Employment
Salvatore Nigro

Madrid, Spain
www.efe.org



Institut des Hautes Etudes de Management
Driss Ksikes

Rabat, Morocco
www.hem.ac.ma



Middle East Technical University
Asuman Göksel

Ankara, Turkey
www.metu.edu.tr



Finnish Youth Research Network
Sofia Laine

Helsinki, Finland
<http://www.nuorisotutkimusseura.fi>



Lebanese American University
Ghassan Dibeh

Beirut, Lebanon
www.lau.edu.lb



American University in Cairo
Bahgat Korany

Cairo, Egypt
www.aucegypt.edu



University of Liverpool
Kenneth Roberts

Liverpool, United Kingdom
www.liv.ac.uk



University of Lleida
Carles Feixa

Lleida, Spain
www.udl.es



University of Milano-Bicocca
Carmen Leccardi

Milano, Italy
www.unimib.it



University of Bremen
Jochen Tholen

Bremen, Germany
www.uni-bremen.de



University of Plovdiv
Siyka Kovacheva

Plovdiv, Bulgaria
<https://www.uni-plovdiv.bg>

COORDINATOR CIDOB
Elisabets 12, 08001 Barcelona, Spain
Tel: +34 933 026 495
www.cidob.org



CONTACT sahwa@cidob.org

www.sahwa.eu



@SAHWAProject



SAHWA Project